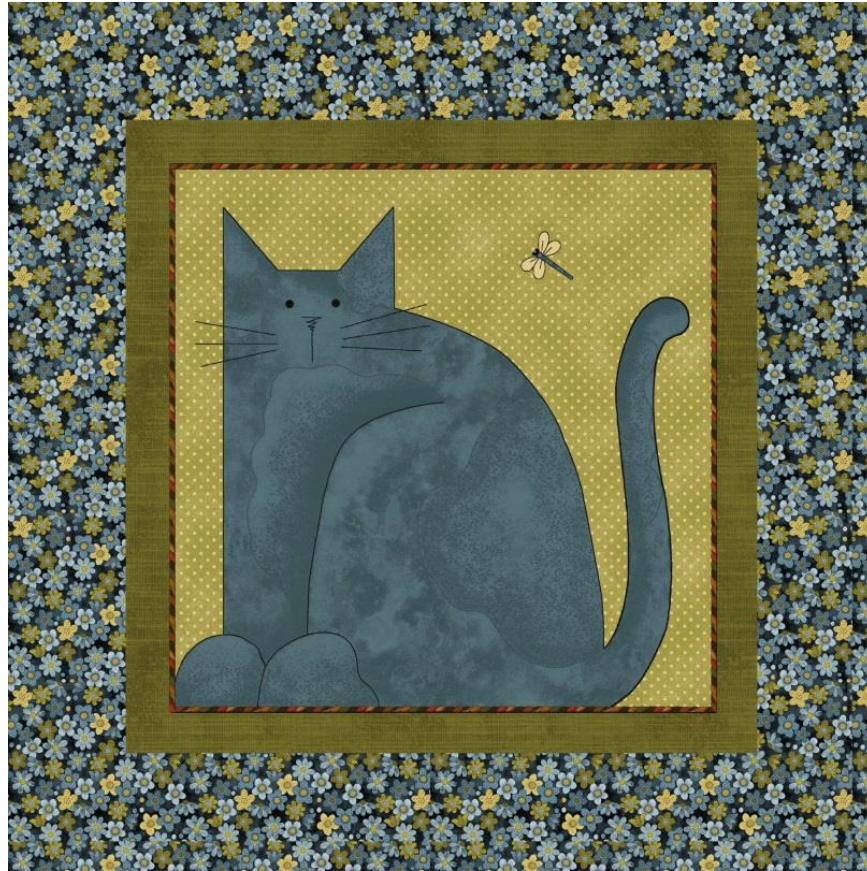


# Crafty Cats Blue Pillow

Approximately 14" X 14"



## **Materials Needed:**

Crafty Cats panel #1406-88

1/2 yard of border and backing fabric – Garden Days Floral #1077-55

Batting

Poly-fil Polyester stuffing

## **Directions:**

1. Trim the cat panel with the green border to measure 8-1/2" X 8-1/2"
2. Cut a 15" X 15" square of border fabric for the backing, then cut 3" strips for the border.
3. Sew to the sides, top and bottom.
4. Lay face down on the backing fabric.
5. Lay both pieces on two layers of quilt batting.
6. Sew a 1/4" seam all around leaving 6" on the bottom open for turning.
7. Trim the edges and clip the corners.
8. Turn inside out *between* the two layers of batting.
9. Stuff with poly-fil between the layers of batting.
10. Fold under the opening on the bottom by 1/4" and pin in place.
11. Hand stitch the opening closed using matching thread.