

Gone Fishing Wall Hanging 20" X 26"

Using the Moose Lake fabric line by Benartex



Materials needed:

One Moose Lake fabric panel
#5090-99

1/8 yd of brown sashing
We used
Weathered #5094-88 Cinnamon

1/3 yard of green border & binding
We used Moose Toss #5091-44

Cutting Directions:

Sashing fabric-

3 1-1/2" x WOF strips

Border & binding fabric-

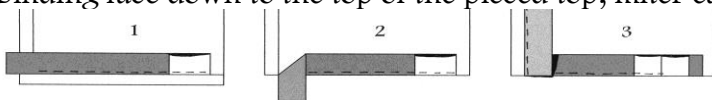
First cut 3 2-1/2" x WOF -border

From the remainder

Cut 2 2-1/4" x WOF (binding)

*Trim & add the remainder
of the border fabric as needed*

1. Mark both of the panel pictures with an extra 1" of the green border all the way around.
2. The top picture should be approx. 9-1/2" x 20".
3. The bottom picture should be approx. 4-1/2" x 20". Cut out both of them.
4. Sew a 1-1/2" sashing strip between them and trim the edge to even up both pieces.
5. Sew one brown sashing strip down one side and trim the excess on the ends to match the panel.
6. Press all seams as you go.
7. Sew another brown sashing strip to the other side and trim.
8. Sew the remainder of each sashing strip across the top and bottom and trim the excess.
9. Sew one green border strip down one side and trim the excess.
10. Sew another green border strip down the other side and trim.
11. Sew the remainders of each green border strip across the top and bottom.
12. Trim the excess on each.
13. Lay the quilt top on a layer of batting and backing fabric. Quilt by hand or machine.
14. Sew the binding strips end to end, making a continuous strip of binding for the quilt.
15. Add the remaining strips from the left-over border fabric as needed. You will need about 94".
16. Fold in half lengthwise, with right sides out, and press flat.
17. Pin around the edge of the pieced top with the raw edges to the outside edge of the quilt.
18. Sew the binding face down to the top of the pieced top, miter each corner.



19. Overlap the ends. Fold over to the back, pin, and hand-stitch on the back of the quilt.