

Flowers in the Pumpkin 17" X 20" Wall Hanging



Materials needed:

One Pumpkin Patch panel
#2770-88

1/8 yard for sashing
#2776-87

1/3 yard for border/binding
#2774-28

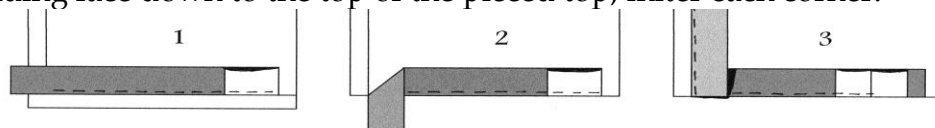
1/2 yard for backing

Cutting:

Sashing dark orange #2776-87
2 1-1/2" strips

Border/binding orange #2774-28
2 2-1/2" strips
2 2-1/2" strips (binding)

1. Trim the panel picture outside the red edge with 1/4" extra all the way around.
2. Cut two 1-1/2" strips of dark orange fabric for the sashing.
3. Sew one sashing strip to each side and trim the excess on the ends to match the panel.
4. Sew the remaining strip to the top and bottom and trim the excess.
5. Cut two 2-1/2" strips of lighter orange fabric for the border.
6. Sew one border strip to each side and trim the excess.
7. Sew the remaining border strip to the top and bottom and trim the excess.
8. Lay the quilt top on a layer of batting and backing fabric. Hand or machine the quilt.
9. Cut two 2-1/2" X WOF strips of border fabric and sew end to end, making a continuous strip of binding for the quilt.
10. Fold in half lengthwise, with right sides out, and press flat.
11. Pin around the edge of the pieced top with the raw edges to the outside edge of the quilt.
12. Sew the binding face down to the top of the pieced top, miter each corner.



13. Overlap the ends. Fold over to the back, pin, and hand-stitch on the back of the quilt.