

Boots in the Garden 16" X 20" Wall Hanging

Using the Sunshine Garden fabric line by Benartex



Materials needed:

One Sunshine Garden fabric panel
#3490-50

1/8 yard for sashing
#2774-44 Dark green

1/2 yard for border/binding /backing
#3492-50 Blue

Cutting:

Sashing dark green:

2 1-1/2" strips

Border/binding blue:

Cut 18" x 22" for backing-set aside

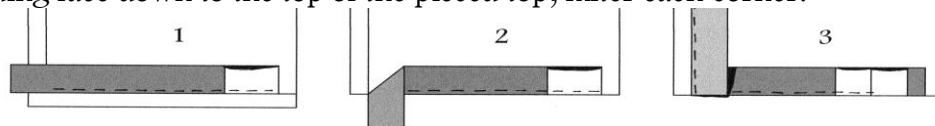
Then cut

4 2-1/2" x WOF strips (border)

3 2-1/4" x WOF strips (binding)

***Use the remainder of the border strips
as needed to cut more binding

1. Mark the panel picture outside the edge with an extra 1/4" around, approx. 9-1/2" x 13-1/2" & cut out.
2. Sew one sashing strip to each side and trim the excess on the ends to match the panel.
3. Press the seams as you go.
4. Sew the remaining sashing strip to the top and bottom and trim the excess.
5. Sew one border strip to each side and trim the excess. Save the excess for the binding.
6. Sew the remaining border strips to the top and bottom and trim the excess.
7. Lay the quilt top on a layer of batting and backing fabric. Quilt by hand or machine.
8. Sew the 2-1/4" strips end to end, making a continuous strip of binding for the quilt.
9. Add the remaining border strips as needed to measure 78" for the binding.
10. Fold in half lengthwise, with right sides out, and press flat.
11. Pin around the edge of the pieced top with the raw edges to the outside edge of the quilt.
12. Sew the binding face down to the top of the pieced top, miter each corner.



13. Overlap the ends. Fold over to the back, pin, and hand-stitch on the back of the quilt.

To see other available designs, please visit www.prairiegrovepeddler.com