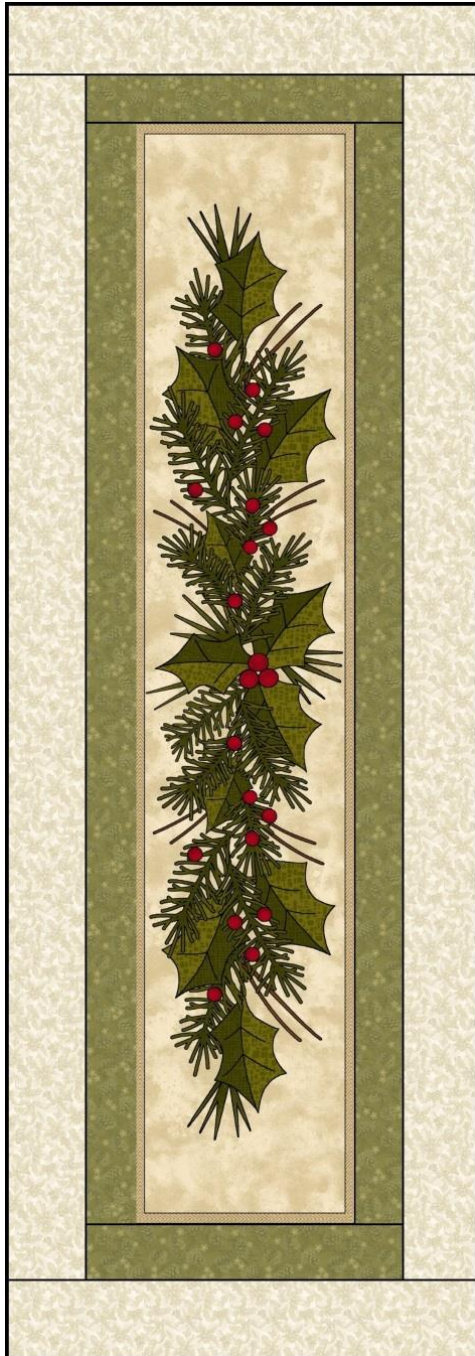


## Prairie Grove Peddler Holly Leaves Table Runner 11" x 24"

Using the Winter Wonderland fabric line by Benartex



### Materials needed:

One Winter Wonderland fabric panel #4650-99

1/8 yard for sashing #4654-44 Green

1/2 yard for border/binding with backing  
#4656-07 Cream

### Cutting:

Sashing fabric

Cut 3 1-1/2" x WOF

Border fabric

Cut 2 2" x WOF (borders)

Cut 1 11" strip for backing  
*Trim it to 11" x 25" wide*

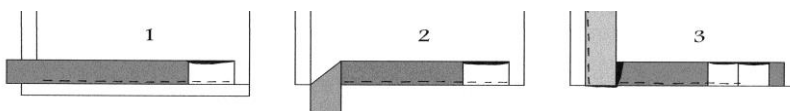
Cut 1 2-1/4" x WOF (binding)

Plus from remainder of backing-

Cut 2 2-1/2" x WOF

1. Mark the panel picture outside the tan edge with an extra 1/4" around, approximately 5" x 19-3/4" and cut out.
2. Sew one green sashing strip to each long side and trim the excess on the ends to match the panel. Press.
3. Sew the remaining sashing strips to short each end of the panel and trim the excess.
4. Sew one border strip down each long side and trim the excess on each. Press as you go.
5. Sew the remaining border strips to the short ends and trim the excess.
6. Lay the quilt top on a layer of batting and backing fabric. Quilt by hand or machine.
7. Sew the binding strips end to end, making a continuous strip of binding for the quilt. You'll need at least 72".
8. Fold in half lengthwise, with right sides out, and press flat.
9. Pin around the edge of the pieced top with the raw edges to the outside edge of the quilt.

10. Sew the binding face down to the top of the pieced top, miter each corner.



11. Overlap the ends. Fold over to the back, pin, and hand-stitch on the back of the quilt.

To see other available designs, please visit [www.prairiegrovepeddler.com](http://www.prairiegrovepeddler.com)