

Prairie Grove Peddler Skate Wall Hanging 15" X 18"

Using the Winter Wonderland fabric line by Benartex



Materials needed:

One Winter Wonderland fabric panel
#4650-99

3" strip for sashing
#4654-72 Tan

1/2 yard for border/binding /backing
#4652-44 Green

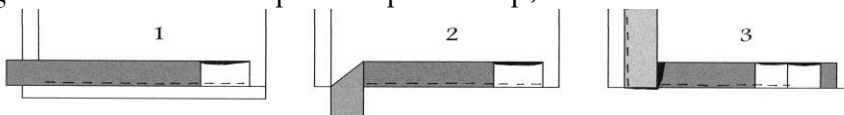
Cutting:

Tan sashing fabric:
2 1-1/2" strips

Green border fabric:
Cut 18" x 19" wide for backing-set aside

Then cut from the remainder-
4 2-1/2" x WOF (border)
3 2-1/4" x WOF (binding)

1. Mark the panel picture outside the tan edge with an extra 1/4" around to measure approximately 9" x 12-3/4" & cut out.
2. Sew one tan sashing strip to each side and trim the excess on the ends to match the panel.
3. Press the seams as you go.
4. Sew the remainder of the tan sashing strip across the top and bottom and trim the excess.
5. Sew one green border strip to each side and trim the excess.
6. Sew the remaining green border strips across the top and bottom and trim the excess.
7. Lay the quilt top on a layer of batting and backing fabric. Quilt by hand or machine.
8. Sew the 2-1/4" strips end to end, making a continuous strip of binding for the quilt.
9. Add the remaining border strips as needed to measure at least 68" for the binding.
10. Fold in half lengthwise, with right sides out, and press flat.
11. Pin around the edge of the pieced top with the raw edges to the outside edge of the quilt.
12. Sew the binding face down to the top of the pieced top, miter each corner.



13. Overlap the ends. Fold over to the back, pin, and hand-stitch on the back of the quilt.

To see other available designs, please visit www.prairiegrovedpeddler.com