

Chicks in the Coffee Pot 11" X 16" Wall Hanging

Using the Chicks on the Run fabric line by Benartex



Materials needed:

**One Chicks on the Run fabric panel
#3110-79**

**1/3 yard for border/binding/backing
#3111-44**

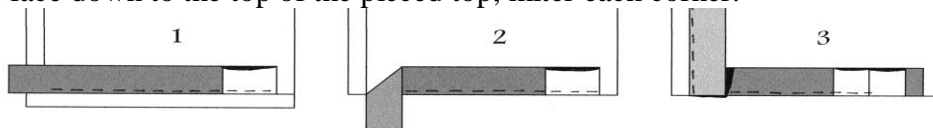
Cut off a 12" x 17" piece for the backing

Then from the remainder cut:

3 2-1/4" x WOF strips
2 more 2-1/4" x WOF strips (for the binding)

1. Mark a 1/4" line outside the second darker green border and cut out.
2. It should measure approx. 7-3/4" x 12-3/4".
3. Sew one border strip to each side and trim the excess.
4. Save all the excess for the binding.
5. Press the seams as you go.
6. Sew the remaining border strip to the top, trim, then sew it to the bottom.
7. Trim the excess again and save.
8. Lay the quilt top on a layer of batting and backing fabric and quilt.
9. Sew the binding strips end to end, making a continuous strip of binding for the quilt by hand or machine.

9. Cut an additional binding strip from the left over border strips as needed. You will need approximately 60".
10. Fold in half lengthwise, with right sides out, and press flat.
11. Pin around the edge of the pieced top with the raw edges to the outside edge of the quilt.
12. Sew the binding face down to the top of the pieced top, miter each corner.



13. Overlap the ends. Fold over to the back, pin, and hand-stitch on the back of the quilt.

To see other available designs, please visit www.prairiegrovepeddler.com