

Prairie Grove Peddler Snowman Wall Hanging 16" X 28"

Using the Winter Wonderland fabric line by Benartex



Materials needed:

One Winter Wonderland fabric panel #4650-99

3" strip of green for sashing
#4654-44 Green

2/3 yard for border/binding/backing
#4651-45 Dark green

Sashing:

2 1-1/2" x WOF strips (outer sashing)

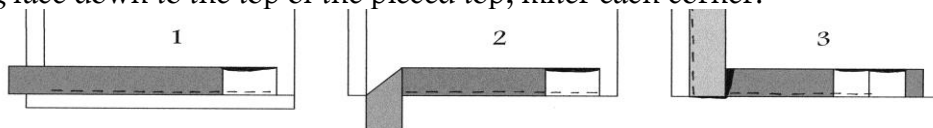
Border fabric:

First cut 2 2-1/2" x WOF (borders)

Cut one 17" x 29" wide
for backing

Cut 6 more 2-1/4" x WOF from the remainder
for the binding

1. Mark the panel picture to the outside of the red edge all the way around, approx. 10" x 22" and cut out.
2. Sew one green sashing strip to each side and trim the excess on the ends to match the panel.
3. Press all seams as you go.
4. Sew the remainder of each green sashing strip across the top and bottom and trim the excess.
5. Sew one border strip to each side and trim the excess.
6. Sew a remaining border strip across the top and another across the bottom and trim the excess on each.
7. Lay the quilt top on a layer of batting and backing fabric. Quilt by hand or machine.
8. Sew the binding strips end to end, making a continuous strip of binding for the quilt.
9. You will need at least 90" of binding.
10. Fold in half lengthwise, with right sides out, and press flat.
11. Pin around the edge of the pieced top with the raw edges to the outside edge of the quilt.
12. Sew the binding face down to the top of the pieced top, miter each corner.



13. Overlap the ends. Fold over to the back, pin, and hand-stitch on the back of the quilt.

To see other available designs, please visit www.prairiegrovepeddler.com